

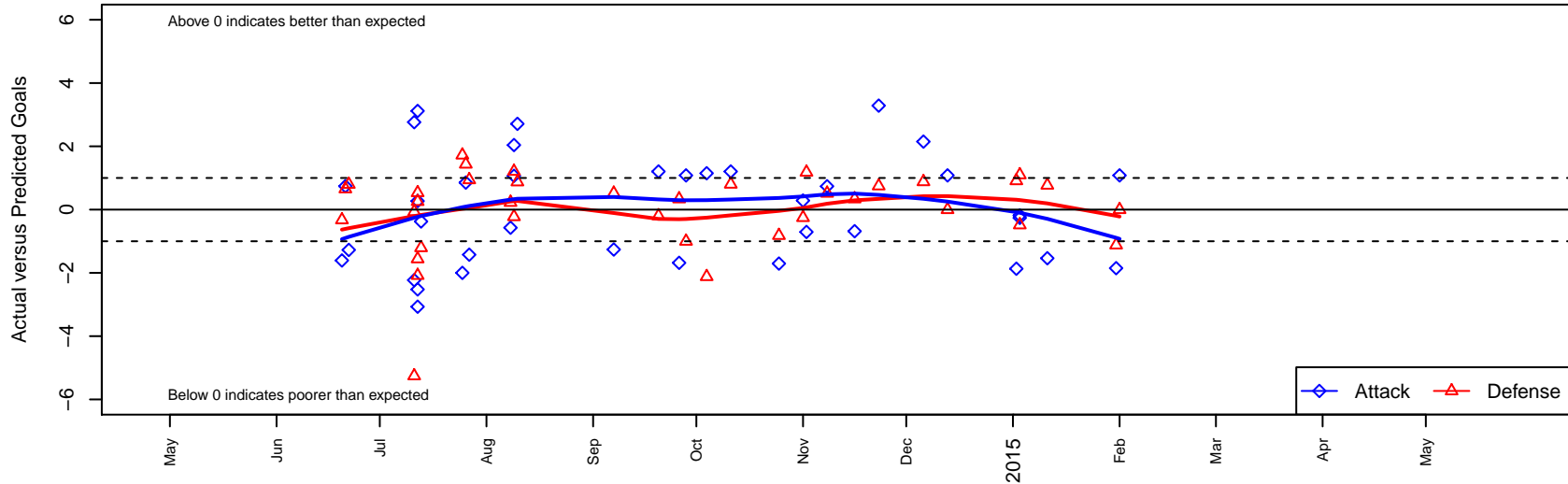
Highline Premier Blue B98

Highline Premier FC
 Burien, WA
 B98 total strength=1645
 attack=20.85 defense=16.8
 fall league = PSPL Premier U16

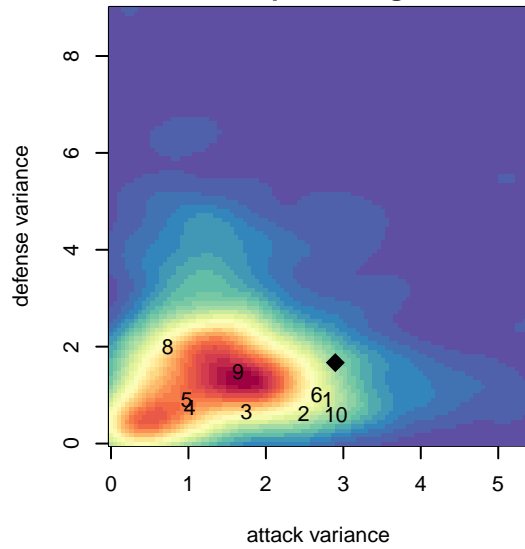
alt names used:
 Highline Premier FC B98 Blue
 HIGHLINE PREMIER FC B98 BLUE (WA)
 HPFC B98 Blue
 Highline Premier FC B98 Blue
 HIGHLINE PREMIER FC HPFC B98 BLUE (W,
 HPFC 98 Blue
 HIGHLINE PREMIER FC HPFC B98 BLUE (W,

Venues played:
 2014 US Club Regionals Premier U16
 2014 Nike Crossfire Challenge Gold U16
 2014 Seattle Cup BU16
 2014 Sounders FC Cup BU16
 2014 Mt Hood Challenge U16
 2014 PSPL Premier U16
 2014 PacNW Winter Classic Premier U16
 2014 WA Cup U16 Gold U16

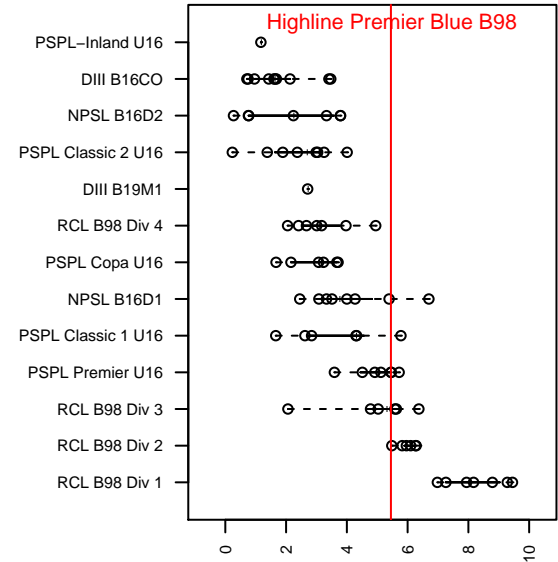
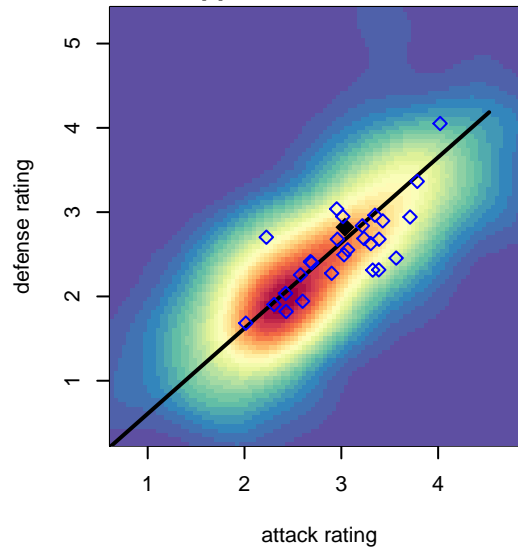
Highline Premier Blue B98
 Dots are actual minus expected GF (blue circles) and GA (red triangles).
 Blue line is smoothed change in attack strength. Red is smoothed change in defense strength.



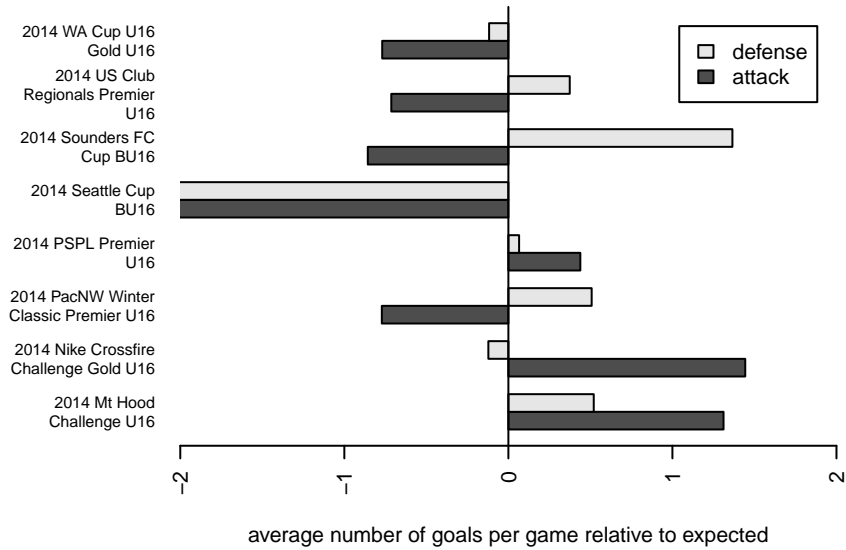
**attack and defense variance (black dot)
relative to other teams
and top 10 in region**



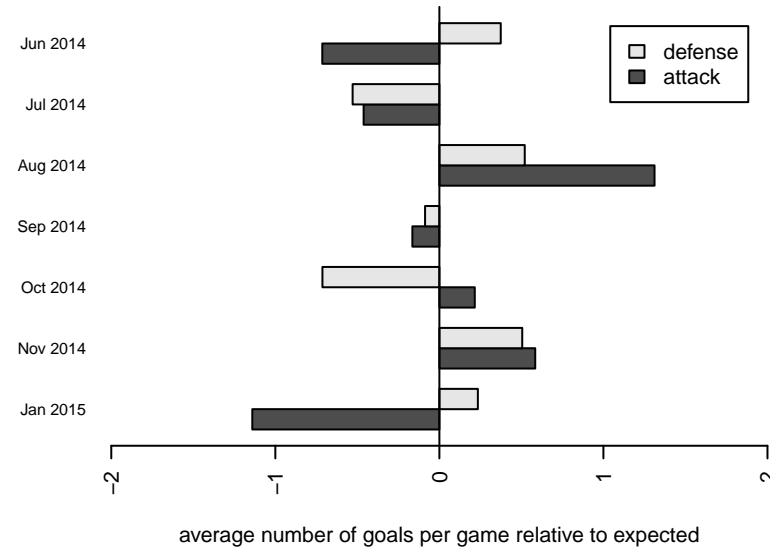
**attack and defense rating
relative to others at age
and all opponents in last 13 months**



Performance relative to 13 month average



Performance relative to 13 month average



| date | home | | away | | venue | pred.home | pred.away |
|-------------|-------------------------------|---|-------------------------------|---|--|------------------|------------------|
| 2015-02-01 | Highline Premier Blue B98 | 3 | WPFC Fury Black B98 | 1 | 2014 WA Cup U16 Gold U16 | 1.92 | 1.00 |
| 2015-01-31 | Highline Premier Blue B98 | 0 | MRFC Blue B98 | 2 | 2014 WA Cup U16 Gold U16 | 1.85 | 0.88 |
| 2015-01-11 | RSA Elite B98 | 0 | Highline Premier Blue B98 | 2 | 2014 WA Cup U16 Gold U16 | 0.77 | 3.54 |
| 2015-01-03 | Highline Premier Blue B98 | 1 | ISC Gunners A B98 | 2 | 2014 PacNW Winter Classic Premier U16 | 1.26 | 1.52 |
| 2015-01-03 | Highline Premier Blue B98 | 1 | Crossfire Premier B B98 | 1 | 2014 PacNW Winter Classic Premier U16 | 1.18 | 2.10 |
| 2015-01-02 | Eastside FC White B98 | 1 | Highline Premier Blue B98 | 0 | 2014 PacNW Winter Classic Premier U16 | 1.91 | 1.87 |
| 2014-12-13 | Highline Premier Blue B98 | 3 | WPFC Fury Black B98 | 1 | 2014 PSPL Premier U16 | 1.92 | 1.00 |
| 2014-12-06 | MRFC Blue B98 | 0 | Highline Premier Blue B98 | 4 | 2014 PSPL Premier U16 | 0.88 | 1.85 |
| 2014-11-23 | Highline Premier Blue B98 | 6 | FC Spokane Black B98 | 0 | 2014 PSPL Premier U16 | 2.71 | 0.75 |
| 2014-11-16 | Highline Premier Blue B98 | 1 | Emerald City FC Green B98 | 1 | 2014 PSPL Premier U16 | 1.68 | 1.34 |
| 2014-11-08 | Highline Premier Blue B98 | 2 | ISC Gunners A B98 | 1 | 2014 PSPL Premier U16 | 1.26 | 1.52 |
| 2014-11-02 | XiFA 2017 B98 | 0 | Highline Premier Blue B98 | 1 | 2014 PSPL Premier U16 | 1.18 | 1.71 |
| 2014-11-01 | FC Spokane Black B98 | 1 | Highline Premier Blue B98 | 3 | 2014 PSPL Premier U16 | 0.75 | 2.71 |
| 2014-10-25 | Highline Premier Blue B98 | 0 | XiFA 2017 B98 | 2 | 2014 PSPL Premier U16 | 1.71 | 1.18 |
| 2014-10-11 | NW United Premier B98 | 1 | Highline Premier Blue B98 | 3 | 2014 PSPL Premier U16 | 1.80 | 1.80 |
| 2014-10-04 | Highline Premier Blue B98 | 3 | MRFC Blue B98 | 3 | 2014 PSPL Premier U16 | 1.85 | 0.88 |
| 2014-09-28 | WPFC Fury Black B98 | 2 | Highline Premier Blue B98 | 3 | 2014 PSPL Premier U16 | 1.00 | 1.92 |
| 2014-09-26 | Emerald City FC Green B98 | 1 | Highline Premier Blue B98 | 0 | 2014 PSPL Premier U16 | 1.34 | 1.68 |
| 2014-09-20 | Highline Premier Blue B98 | 3 | NW United Premier B98 | 2 | 2014 PSPL Premier U16 | 1.80 | 1.80 |
| 2014-09-07 | ISC Gunners A B98 | 1 | Highline Premier Blue B98 | 0 | 2014 PSPL Premier U16 | 1.52 | 1.26 |
| 2014-08-10 | TFA Willamette Athleticos B98 | 1 | Highline Premier Blue B98 | 4 | 2014 Mt Hood Challenge U16 | 1.87 | 1.29 |
| 2014-08-09 | Highline Premier Blue B98 | 3 | HSC Freeze B98 | 3 | 2014 Mt Hood Challenge U16 | 0.96 | 2.77 |
| 2014-08-09 | Highline Premier Blue B98 | 3 | WAFC Scorpions B98 | 0 | 2014 Mt Hood Challenge U16 | 1.93 | 1.21 |
| 2014-08-08 | Highline Premier Blue B98 | 1 | WAFC Premier B98 | 1 | 2014 Mt Hood Challenge U16 | 1.57 | 1.23 |
| 2014-07-27 | FWFC Blue B98 | 1 | Highline Premier Blue B98 | 0 | 2014 Sounders FC Cup BU16 | 1.94 | 1.42 |
| 2014-07-26 | Dragons FC B98 | 0 | Highline Premier Blue B98 | 2 | 2014 Sounders FC Cup BU16 | 1.43 | 1.15 |
| 2014-07-25 | Highline Premier Blue B98 | 0 | Tacoma United Chelsea Jrs B98 | 0 | 2014 Sounders FC Cup BU16 | 2.00 | 1.72 |
| 2014-07-13 | Highline Premier Blue B98 | 0 | WPFC Black B98 | 5 | 2014 Nike Crossfire Challenge Gold U16 | 0.38 | 3.79 |

| date | home | | away | | venue | pred.home | pred.away |
|-------------|-----------------------------------|---|---------------------------|---|--|------------------|------------------|
| 2014-07-12 | Seattle United Tango B98 | 1 | Highline Premier Blue B98 | 4 | 2014 Nike Crossfire Challenge Gold U16 | 1.25 | 0.88 |
| 2014-07-12 | Highline Premier Blue B98 | 1 | PacNW Maroon B98 | 2 | 2014 Nike Crossfire Challenge Gold U16 | 0.73 | 2.53 |
| 2014-07-12 | Highline Premier Blue B98 | 0 | FC Tacoma Blue B98 | 3 | 2014 Seattle Cup BU16 | 3.07 | 0.92 |
| 2014-07-12 | Seattle United Shoreline Blue B98 | 2 | Highline Premier Blue B98 | 1 | 2014 Seattle Cup BU16 | 0.44 | 3.52 |
| 2014-07-11 | Snohomish United Black B98 | 2 | Highline Premier Blue B98 | 4 | 2014 Nike Crossfire Challenge Gold U16 | 1.93 | 1.24 |
| 2014-07-11 | Seattle United S Blue B98 | 6 | Highline Premier Blue B98 | 1 | 2014 Seattle Cup BU16 | 0.74 | 3.23 |
| 2014-06-22 | NWN Red B97 | 1 | Highline Premier Blue B98 | 0 | 2014 US Club Regionals Premier U16 | 1.80 | 1.27 |
| 2014-06-21 | Highline Premier Blue B98 | 2 | MRFC Blue B97 | 0 | 2014 US Club Regionals Premier U16 | 1.26 | 0.65 |
| 2014-06-20 | ETFC Boca Jrs Red B97 | 1 | Highline Premier Blue B98 | 0 | 2014 US Club Regionals Premier U16 | 0.67 | 1.61 |